

THE SELF POWERED

WIRELESS SWITCH

Instruction Manual

CURVSW01 • CURVSW02 • CURVSW03



Wireless Switch
curv360.co.uk

cürv

These instructions provide information on installation and operation. Please keep this booklet safe for future reference.

The Curv Wireless Switch pack contains a self-powered wireless switch and receiver.

Self-powered Wireless Switch

Thank you for purchasing the Curv Wireless Switch. Before use, please read these instructions carefully.

The Curv wireless switch pairs to a wireless receiver. It can be used to control lights, fans, or anything that you can successfully connect to the receiver. You can pair multiple switches and receivers, giving you multiple options.

The innovative self-powered technology means that it generates energy through clicks, therefore a battery is not required, this avoids the trouble of changing the battery and protects the environment. You can pair multiple switches and receivers.

Technical Data

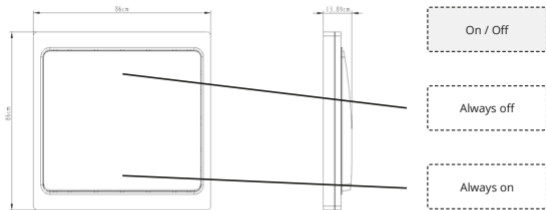
Power Supply	Self-powered (no batteries required)
On / Off Cycles	Up to 200000 clicks
Radio Frequency	433Mhz
Covering Range	Up to 30m (Indoor)
Ambient Conditions	Temperature:-20°C/ 60°C; Humidity:0 % RH/ 75% RH; No condensation
Installation	Double sided Tape or Screw

Enclosure	Fireproofing PC
Weight	60g
Interchangeable Colour Surround	Ivory White, Champagne Gold, Sky Silver

Product Table

CURVSW01	On/Off - 1 Gang Switch
CURVSW02	On/Off - 2 Gang Switch
CURVSW03	On/Off - 3 Gang Switch

Switch Operation and Dimensions



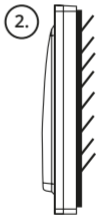
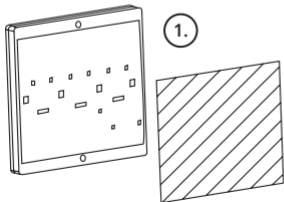
How to Mount

Select your surround colour before mounting, then please follow the instructions below for mounting:

(To avoid the transmitting of signals, please do not mount to metal.)

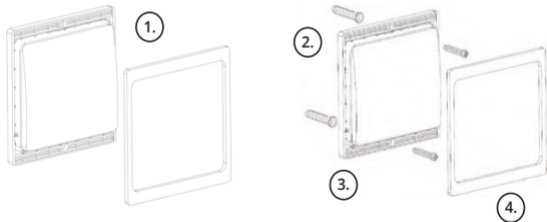
Double Sided Tape

1. Stick the double sided tape onto the back of the switch.
2. Then stick it on to the wall.



With Screws

1. Separate the cover from the switch.
2. Use the screws provided to fix to the wall
3. Reconnect the cover

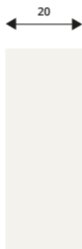
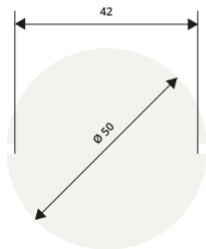


Wireless Switch Receiver

The Wireless Receiver can receive a signal from the wireless switch, so that it can control "On" or "Off" functions. The Wireless Receiver can connect with several switches. The Wireless Receiver is small in size and easy to fit.

The Wireless Receiver is equipped with the relay (TV-5 Certificate).

Receiver Dimensions



units: mm

Technical Data

Wireless Receiver Model	CV05
Power Supply Input	220V - 230V AC, 50/60HZ
Output Type / Channel Numbers	"On" or "Off" output of power supply / 1 channel
Max Load	6A
Load Of Filament Lamp	500W
Load of fluorescent lamp	200W
Load of LED	200W
Static power consumption	<1W

Radio Frequency	433Mhz
Radio Range	Up to 30 metres indoor
Ambient Conditions	Temperature: -40~60°C, humidity: 0~75%RH, no condensation
Enclosure	Fireproof PC
Weight	Aprox 30g
Carried standard	CE

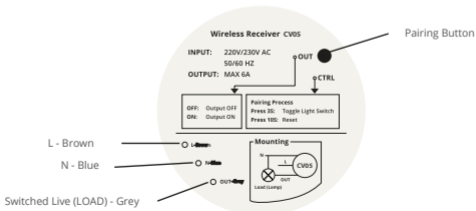
For your safety, these products must be installed in accordance with local Building Regulations. If in any doubt, or where required by the law, consult a competent person who is registered with an electrical certification scheme. Further information is available online or from your local authority.

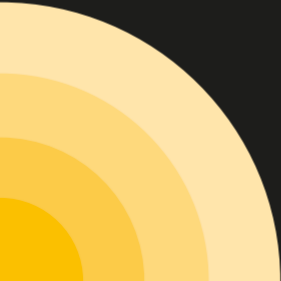
Register your product warranty at curv360.com/warranty

Installation and Operation

The Wireless Receiver is small in size and can be fixed into position easily. It can be fixed near the lights or in the ceiling. This receiver should be installed by a professional.

1. Wire in the Receiver to the light you wish to control
2. To start pairing process press the button on the receiver for 3 seconds, when the light flashes it is ready to pair.
3. Press the wireless switch that you want to control this receiver. When the light stops flashing, the pairing is complete.
4. To unpair simply press and hold the pairing button on the receiver for 10 seconds.





cürv

Wireless Switch
curv360.co.uk