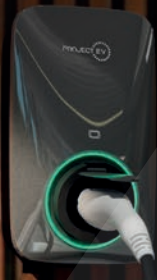


APEX-7.3/22

Fast AC Single Outlet Tethered & Socket Chargers

PROJECT EV



Pro Earth Pen Fault Protection

Featuring built-in pen fault protection as standard, our pro earth APEX EV charger eliminates the need for an earth spike upon installation, or carry out any costly ground-works.



WIFI & Bluetooth Compatible

The APEX features multiple connection options including WIFI, Bluetooth and 4G connectivity. Providing seamless & wireless communication access for your EV charger.



Intelligent Solar

Being fully solar compatible, utilise the power of the sun with APEX. Take advantage of green, solar energy by using the sun to power & charge your vehicle.



Intelligent Dynamic Load Balancing

With dynamic load balancing the APEX EV charger is able to intelligently adjust how much power it draws, allowing it to never draw too much power, but always operate at a happy optimum.



5 Year Warranty*

With a market-leading 5-year warranty, APEX gives you the peace of mind, protection, and guarantee of high-quality after-care services for your EV charger.

Introducing a World of Colour



Racing Green

Ghost White

Nitrous Blue

Black Obsidian

EV Steel

Cherry Red

*APEX series chargers are 'EV Steel' colour as standard. Colour variations of the APEX series chargers are subject to availability.

The APEX Smart App Control Everything



- > Start, stop, & monitor your charging activity with one app.
- > Prioritise off-peak charging.
- > Manage and add multiple charge points to one master account.

Download the APEX App by Project EV, for smart app EV control. Available on both the Google Play and App Store.

Please Note - *APEX 5 year warranty is subjected to terms and conditions
*Please ensure this product is installed to meet all local regulations

Input

	APEX-7S-T APEX-7S-T-4G Tethered	APEX-7S APEX-7S-4G Socket	APEX-22S-T APEX-22S-T-4G Tethered	APEX-22S APEX-22S-4G Socket
Wiring Scheme	1P+N+PE	1P+N+PE	3P+N+PE	3P+N+PE
Voltage	230Vac	230Vac	400Vac	400Vac
Maximum Current	32A	32A	32A	32A
Frequency	50/60Hz	50/60Hz	50/60Hz	50/60Hz

Output

Voltage	230Vac	230Vac	400Vac	400Vac
Maximum Current	32A	32A	32A	32A
Rated Power	7.3kW	7.3kW	22kW	22kW
Power Factor Rating	0.98	0.98		

User Interface & Control

Connector Type	Type 2 Cable	Type 2 Socket	Type 2 Cable	Type 2 Socket
Cable Length	5m	N/A	5m	N/A
RFID Reader	Mifare ISO/IEC 14443 A			
Start Mode	Plug & Play/ RFID Card/ App			

Communication

WiFi ¹	✓	✓	✓	✓
Bluetooth	✓	✓	✓	✓
LAN ²	✓	✓	✓	✓
4G ³	³ Only on the APEX-7S-4G, APEX-7S-T-4G, APEX-22S-4G, APEX-22S-T-4G			
OCPP	OCPP 1.6 JSON, OCPP 2.0.1 Optional			

¹Range capability is dependant on router strength and other environmental factors. ²Lan available only on stocks supplied by Project EV after Q3.

Environment

Installation	Wall-Mount / Post-Mount
Operating Temperature	-30°C ~ 50°C
Operating Humidity	5% ~ 95% No Condensation
Operating Altitude	≤2000m
CT	CT – CT Clamp Included Only in APEX-7S.
Load Management	Yes
Solar Charging	Yes

Safety

IP Protection Rating	IP65 (Socket IP54)
IK Protection Rating	IK08
Integral Protection	DC 6mA ⁴ (Internal RCD-DD meets the trip time characteristics specified in IEC 62955)
Over Current Protection	✓
Residual Current Protection	✓
Pro Earth Pen Fault Protection	✓
Surge Protection	✓
Over Voltage protection	✓
Under Voltage Protection	✓
Over Temperature Protection	✓
Under Temperature Protection	✓
Certification	CE, UKCA
Certification Standard	EN/IEC 61851-1: 2019, EN/IEC 61851-21-2: 2021

⁴Please ensure this product is installed to meet all local regulations.

Dimension And Weight

Product Dimension	320*190*130 mm	320*190*144 mm	320*190*130 mm	320*190*144 mm
Product Weight	4.1kg	2.4kg	5.6kg	2.4kg
Weight with Package	6.2kg	3.9kg		

Product Colour Options⁵

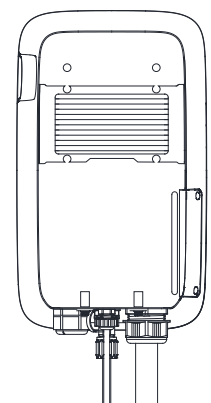
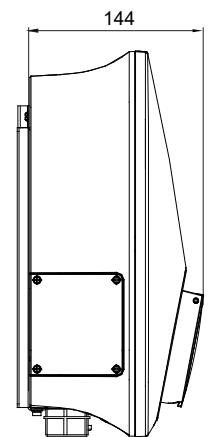
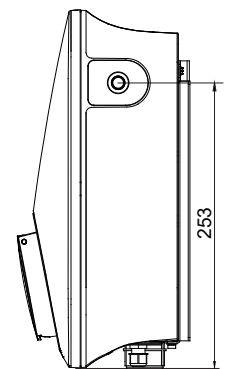
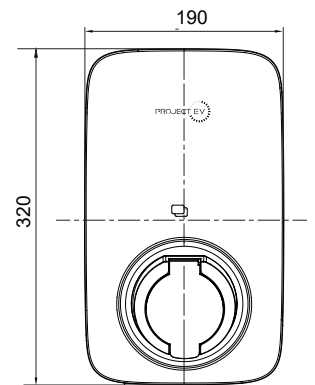


⁵APEX series chargers are 'EV Steel' colour as standard. Further colour options are available upon request, subject to availability.

Mounting & Accessories

Floor Pole	Opt. APEX-SPOST / APEX-DPOST
------------	------------------------------

* Line Drawings for Untethered Unit Only



* Line Drawings for Untethered Unit Only

Please Note - *APEX 5 year warranty is subjected to terms and conditions
*Please ensure this product is installed to meet all local regulations